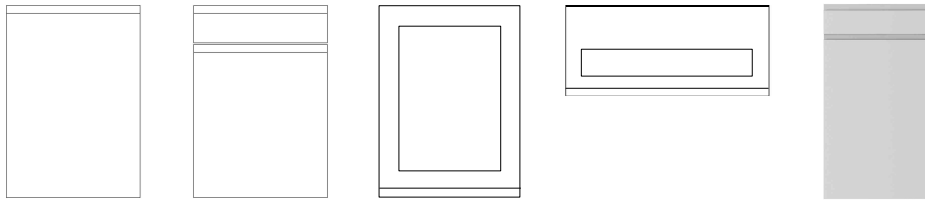


MALMO MATT



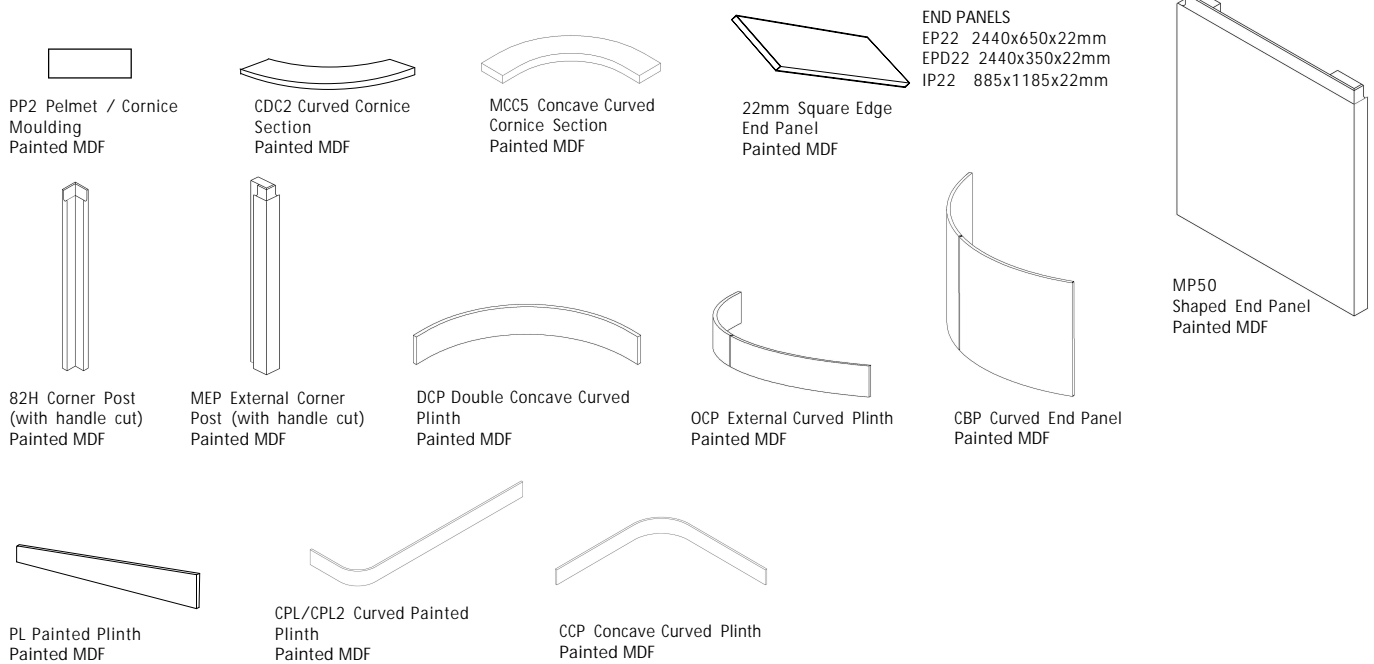
Finishes:
 488-RM Light Grey Matt
 488-MM Mussel Matt
 488-PM Porcelain Matt
 488-WM White Matt

Door Construction: 22mm thick MDF core with handle routed into the top of the door. Silk Matt Polyester finish with matching melamine back.

Special Sizes: Available, see Trade Price List.

Curved Elements: Curved doors available.

Glass Type: 4mm toughened clear glass



Note:

140mm High Drawer Fronts

Please note when fitting a 140mm high drawer front you may have to reposition the drawer runner lower on the carcass. The handle profile runs 38mm from the top of the drawer and 102mm from the bottom.