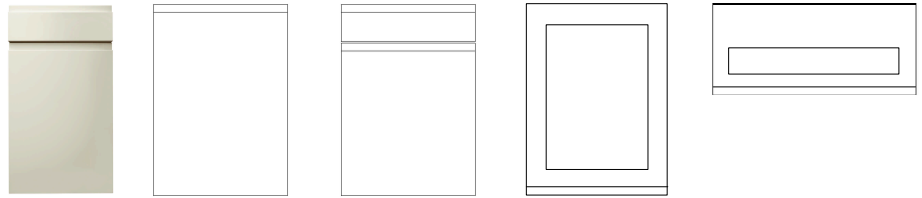


MALMO GLOSS

Finishes:

- 488-CG Cashmere Gloss
- 488-GG Graphite Gloss
- 488-LG Latte Gloss
- 488-RG Light Grey Gloss
- 488-PG Porcelain Gloss
- 488-WG White Gloss



Door Construction: 22mm thick MDF core with handle routed into the top of the door. High gloss lacquered finish with matching melamine (matt) back.

Special Sizes: Available, contact Customer Services for details.

Curved Elements: Curved doors available.

Glass Type: 4mm toughened clear glass.



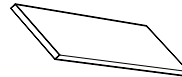
PP2 Light Pelmet & Cornice Moulding
Painted MDF



CDC2 Curved Cornice Section
Painted MDF

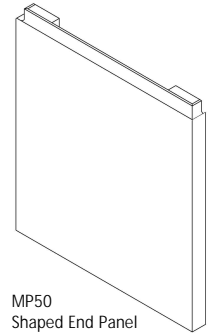


MCC5 Concave Curved Cornice Section
Painted MDF



22mm Square Edge End Panel
Painted MDF

END PANELS
EP22 2440x650x22mm
EPD22 2440x350x22mm
IP22 885x1185x22mm



MP50 Shaped End Panel
Painted MDF



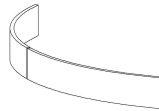
82H Corner Post (with handle cut)
Painted MDF



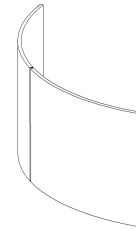
MEP External Corner Post (with handle cut)
Painted MDF



DCP Double Concave Curved Plinth
Painted MDF



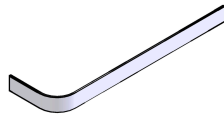
OCP External Curved Plinth
Painted MDF



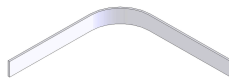
CBP Curved End Panel
Painted MDF



PL Foil Wrapped Plinth
Painted MDF
*Only available in Graphite



CPL/CPL2 Curved Foil Wrapped Plinth
Painted MDF
*Only available in Graphite



CCP Concave Curved Plinth
Painted MDF
*Only available in Graphite

Note:

140mm High Drawer Fronts
Please note when fitting a 140mm high drawer front you may have to reposition the drawer runner lower on the carcass. The handle profile runs 38mm from the top of the drawer and 102mm from the bottom.