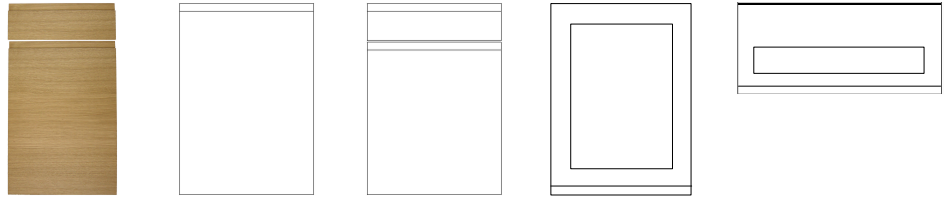


MALMO VENEER

Finishes:

- 888-15 Natural Oak
- 888-BL Bleached Oak
- 888-MT Mid Tone Oak
- 888-SM Smoked Oak



Door Construction: 22mm thick particle board core with a veneer face and reverse. Solid handle inset into top of door/drawer.

Special Sizes: Not available.

Curved Elements: Curved door available.

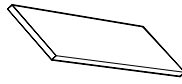
Glass Type: 4mm toughened clear glass.



PEL Light Pelmet & Cornice Moulding
Veneered MDF



CDC Curved Cornice Section
Veneered Chipboard



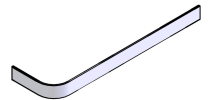
22mm Square Edge End Panel (Horizontal Grain)
Veneered Chipboard

END PANELS

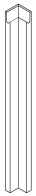
- EP22H 2440x650x22mm
- EPD22H 2440x350x22mm
- IP22H 885x1185x22mm



VP Veneered Plinth
Veneered MDF



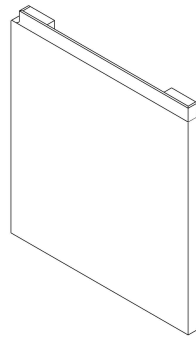
CVP Curved Veneered Plinth
Veneered MDF



82H Corner Post (with handle cut)
Veneered Chipboard



MEP External Corner Post (with handle cut)
Veneered Chipboard



MP50 Shaped End Panel (Horizontal Grain)
Veneered Chipboard

Note:

140mm High Drawer Fronts

Please note when fitting a 140mm high drawer front you may have to reposition the drawer runner lower on the carcass. The handle profile runs 38mm from the top of the drawer and 102mm from the bottom.